

Virtual Public Meeting #3

August 19, 2021

NM 109 (Jarales Rd) Railroad Grade Separation

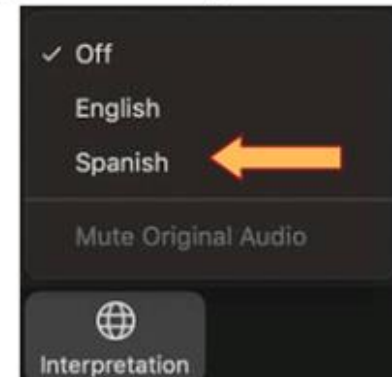
CN A302220



Español

Para Escuchar esta Presentación en Español

1. Haga clic en el icono de "interpretación."
2. Haga clic "Spanish"

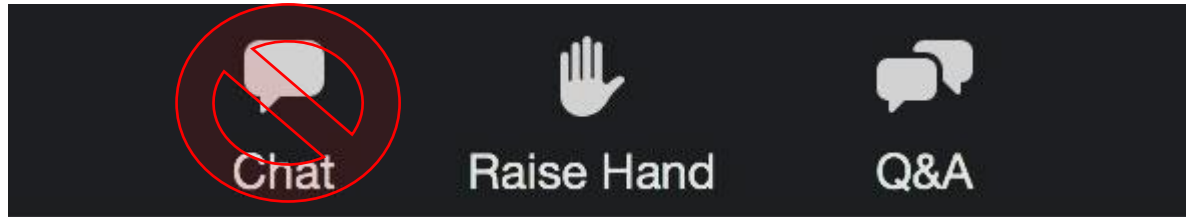


3. Para escuchar solo en español, debe hacer clic en "Mute Original Audio"

Your Meeting Controls

How to use your meeting controls to ask a question or provide your comments:

- Use the raise your hand button to raise your hand
- If you are on the phone press *9 to raise your hand
- Use the Q&A button to type in your question
- Or email your question to jtaschek@ecosphere-services.com



Agenda

6:30 – 7:00 Presentation

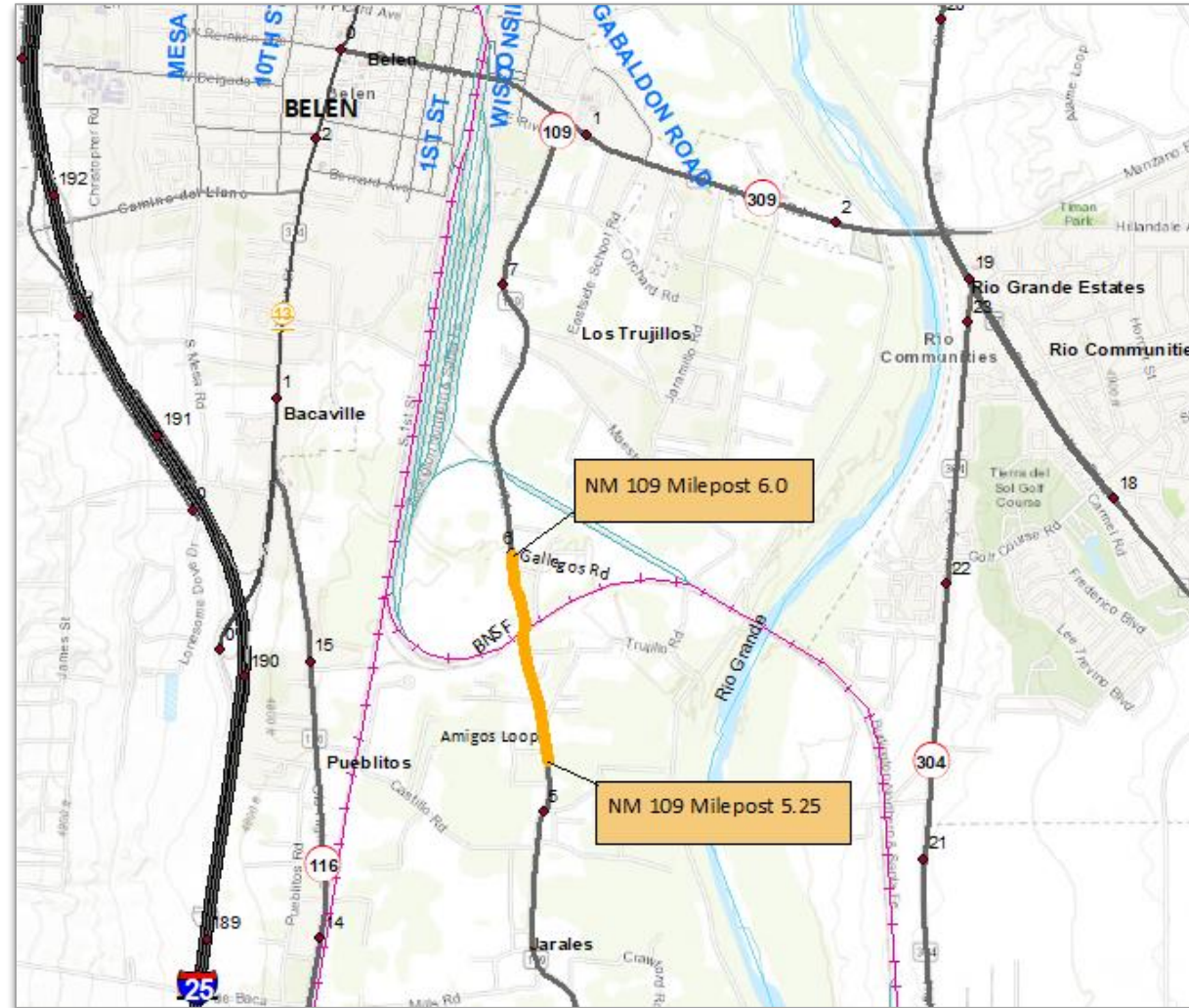
- Welcome: Project Team and Introductions
- Project Location, Background, and Existing Operations
- Purpose and Need
- NMDOT Study/Design Process and Project Timeline
- Proposed Improvements
- Environmental Impacts
- Public Input Opportunities
- Next Steps

7:00 – 8:00 Question and Answer

Introductions

- **NMDOT**
 - Sandra Chavez – NMDOT Project Development Engineer
 - Justin Gibson – NMDOT D3 District Engineer
 - Jill Mosher – NMDOT D3 Assistant District Engineer
- **BNSF**
 - Lindsay Mullins – Executive Director of Government Affairs, BNSF
- **Wilson & Company**
 - Edward Cordova – Principal Engineer
 - Kelly Heath – Structural Engineer
- **Ecosphere**
 - John Taschek – Environmental Planner

Project Location



Background

- Jarales Road currently crosses three BNSF railway tracks as an undivided at-grade signalized crossing.
- NM 109 is the main north/south corridor between Belen and Jarales.
- On average, 90 trains per day move in both directions at this crossing. Some trains are nearly 2 miles long.
- Realignment of NM 109 70-feet (+/-) east with a new bridge over the railroad tracks.



Purpose & Need

The purpose of the project is to provide a safe, uninterrupted route for Jarales Road traffic across the railroad corridor that accommodates current and future rail operations.

The project is needed to address several critical conditions identified for the current at-grade crossings. These conditions include physical deficiencies, safety, travel congestion, and system connectivity.

These needs are addressed with the introduction of a grade-separated intersection.

Project Timeline

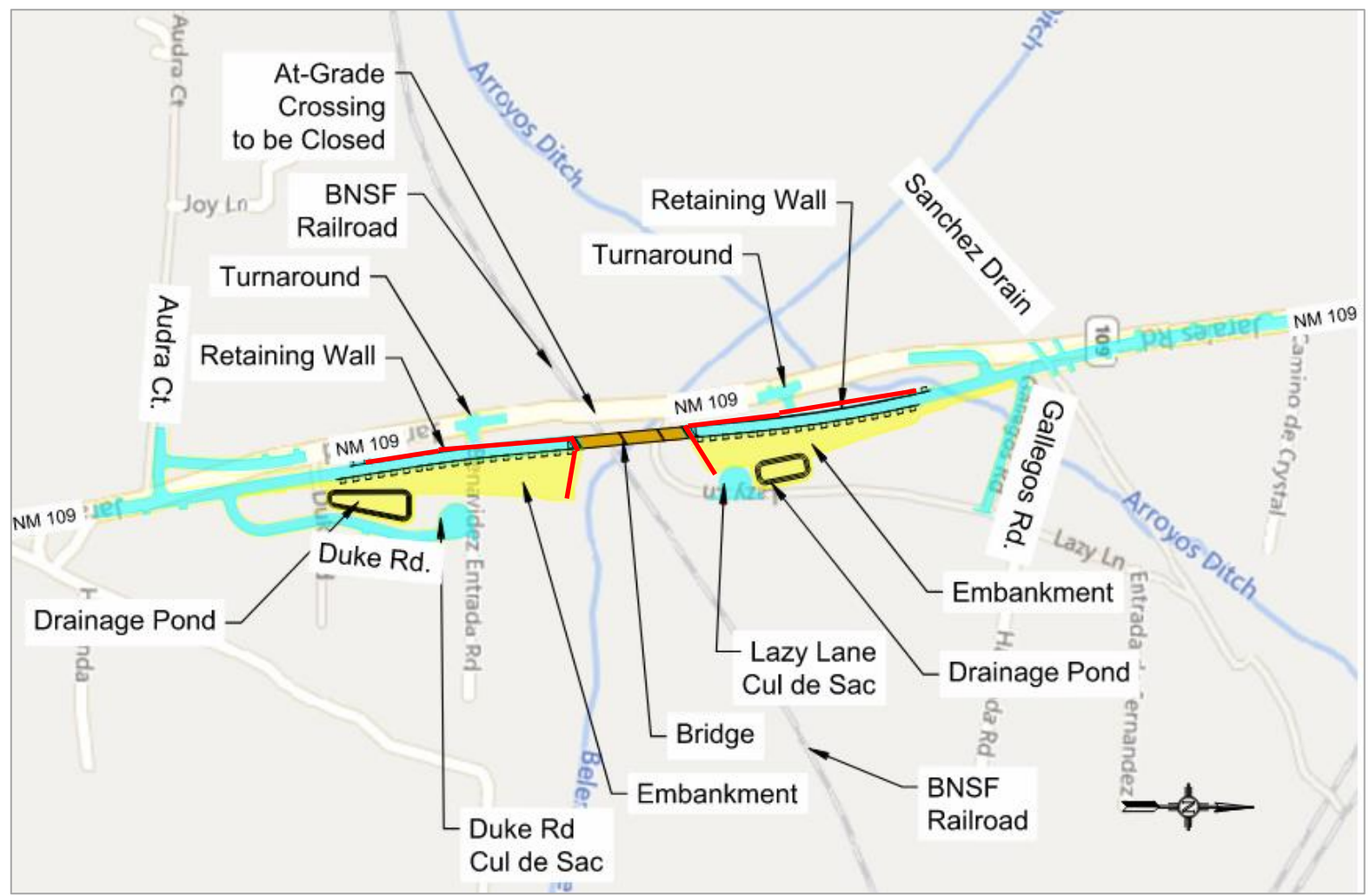
PRELIMINARY DESIGN	APRIL 2021
GEOTECHNICAL INVESTIGATIONS	JULY 2021
RIGHT-OF-WAY ACQUISITIONS	JULY 2021 – MARCH 2022
ENVIRONMENTAL	OCTOBER 2021 (<i>DRAFT</i>)
60% DESIGN	OCTOBER 2021
FINAL DESIGN	Late Spring/Summer 2022

BRIDGE CONSTRUCTION	SUMMER/FALL 2022
---------------------	------------------

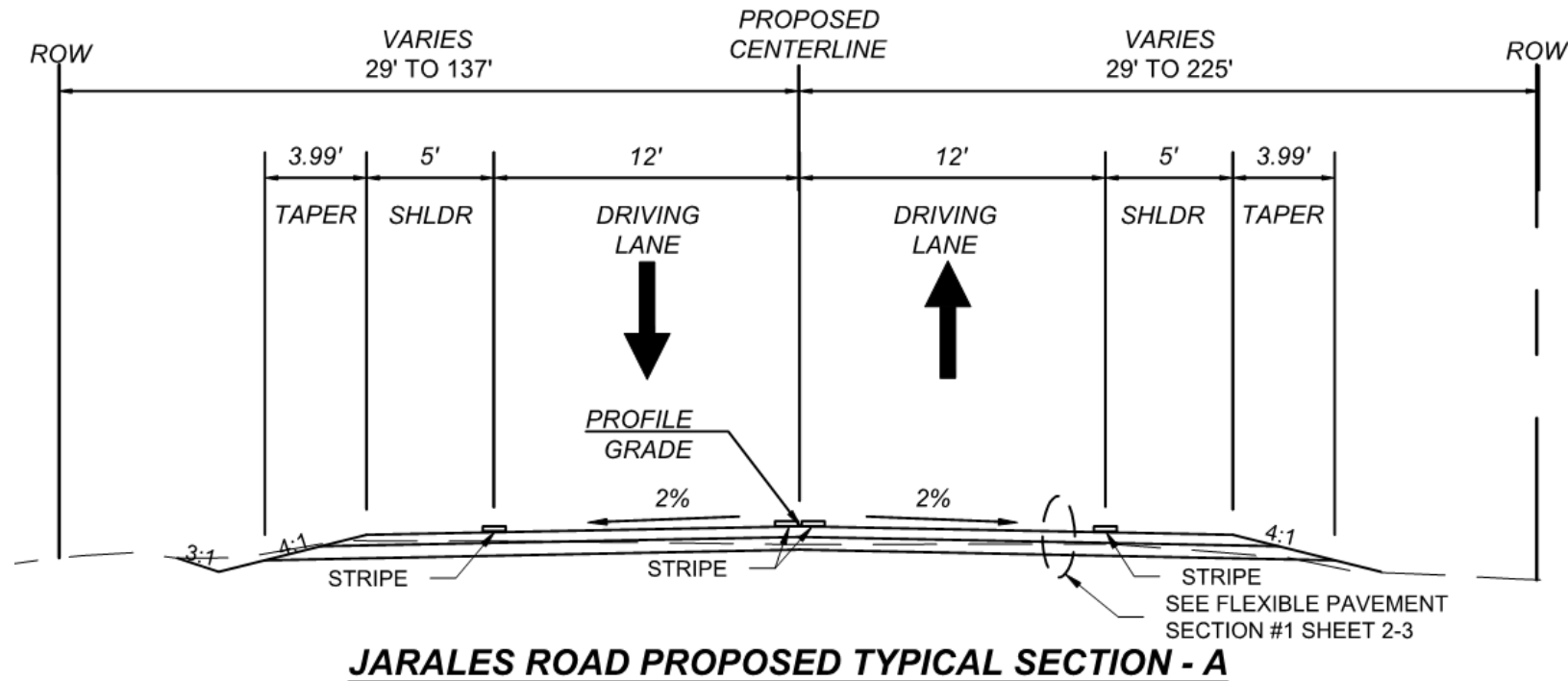
Proposed Improvements Layout

KEY

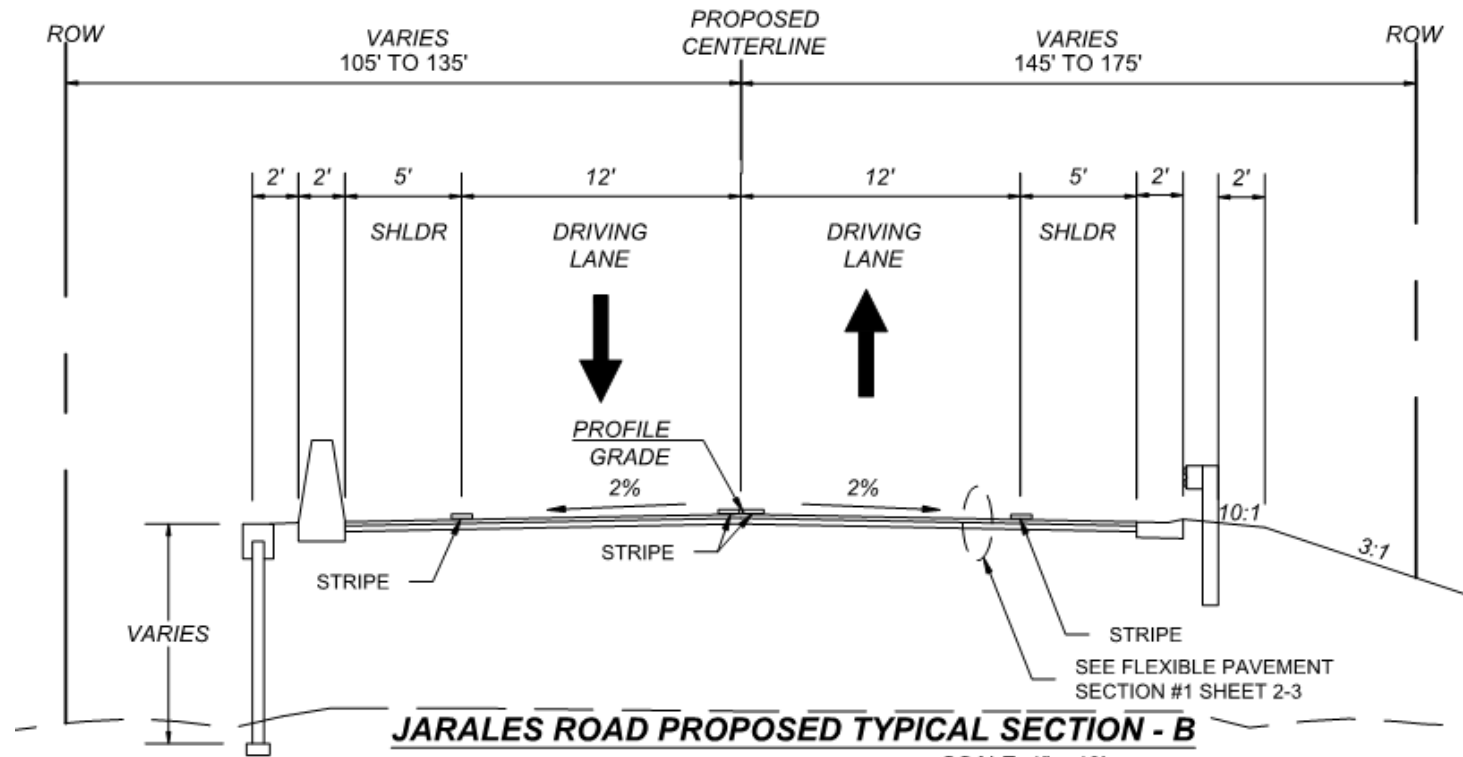
- ROAD IMPROVEMENTS
- EMBANKMENT
- BRIDGE
- RETAINING WALL



Proposed Roadway Typical Sections

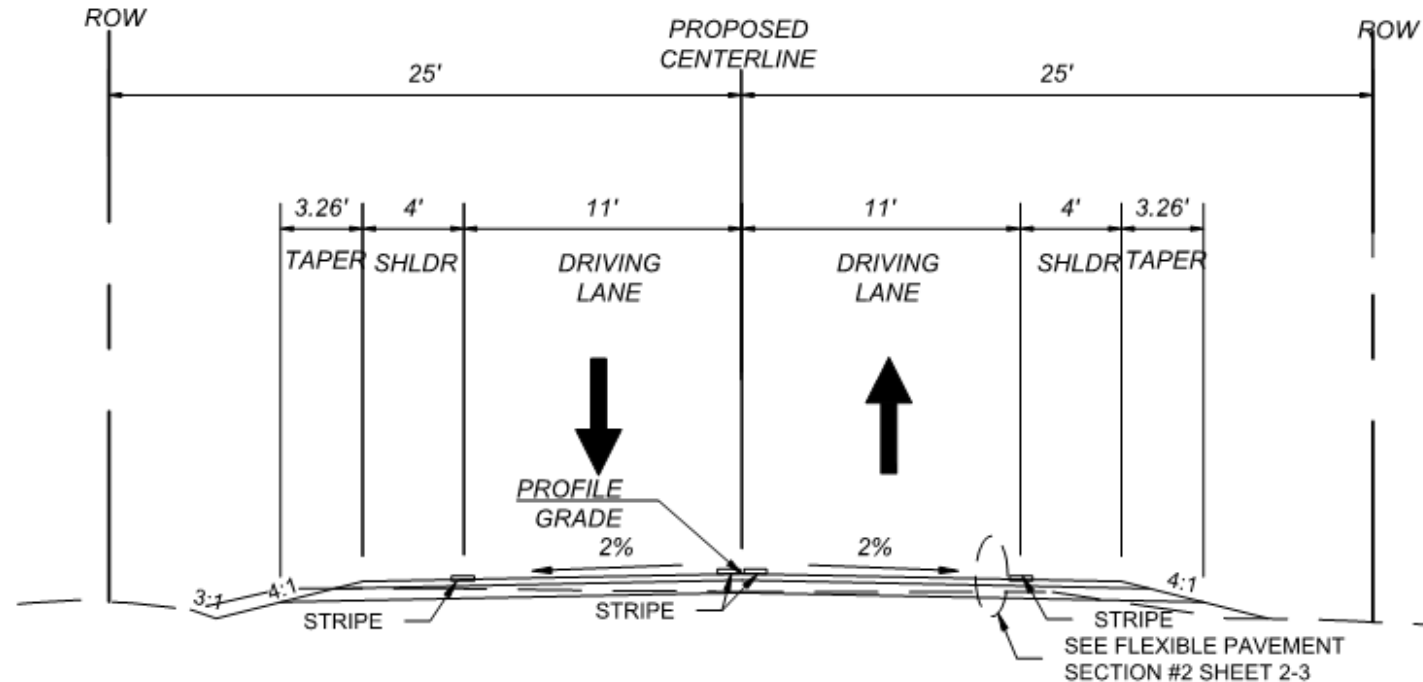


Proposed Roadway Typical Sections



Roadway climbs to proposed bridge
West Side -Concrete Wall Barrier, MSE Wall East Side- Guardrail

Proposed Roadway Typical Sections



Side Roads – Two 11-ft lanes & 4-ft shoulders*
North/South Jarales Frontage Roads, Audra Ct, Duke Rd

*Gallegos Rd will have 2-ft shoulders

South End Project Details

KEY

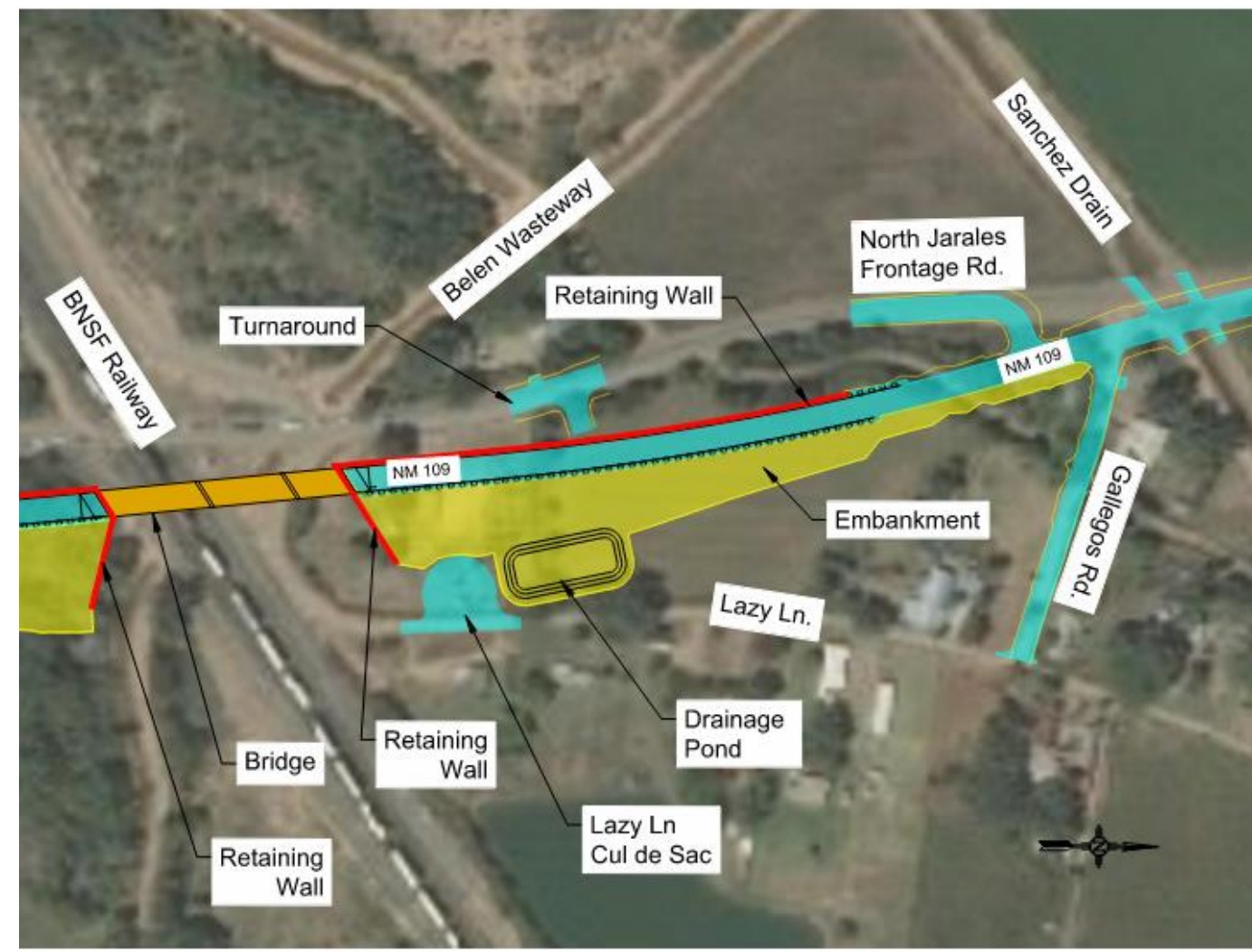
- ROAD IMPROVEMENTS
- EMBANKMENT
- BRIDGE
- RETAINING WALL



Middle Project Details


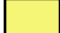


KEY

- ROAD IMPROVEMENTS
- EMBANKMENT
- BRIDGE
- RETAINING WALL



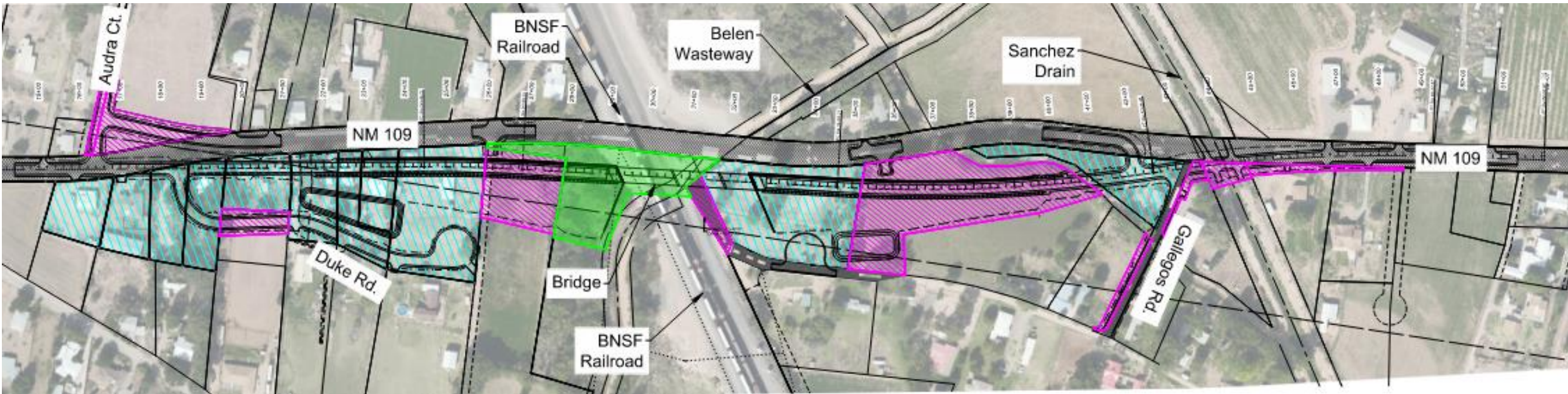
North End Project Details

KEY




-  ROAD IMPROVEMENTS
-  EMBANKMENT
-  BRIDGE
-  RETAINING WALL



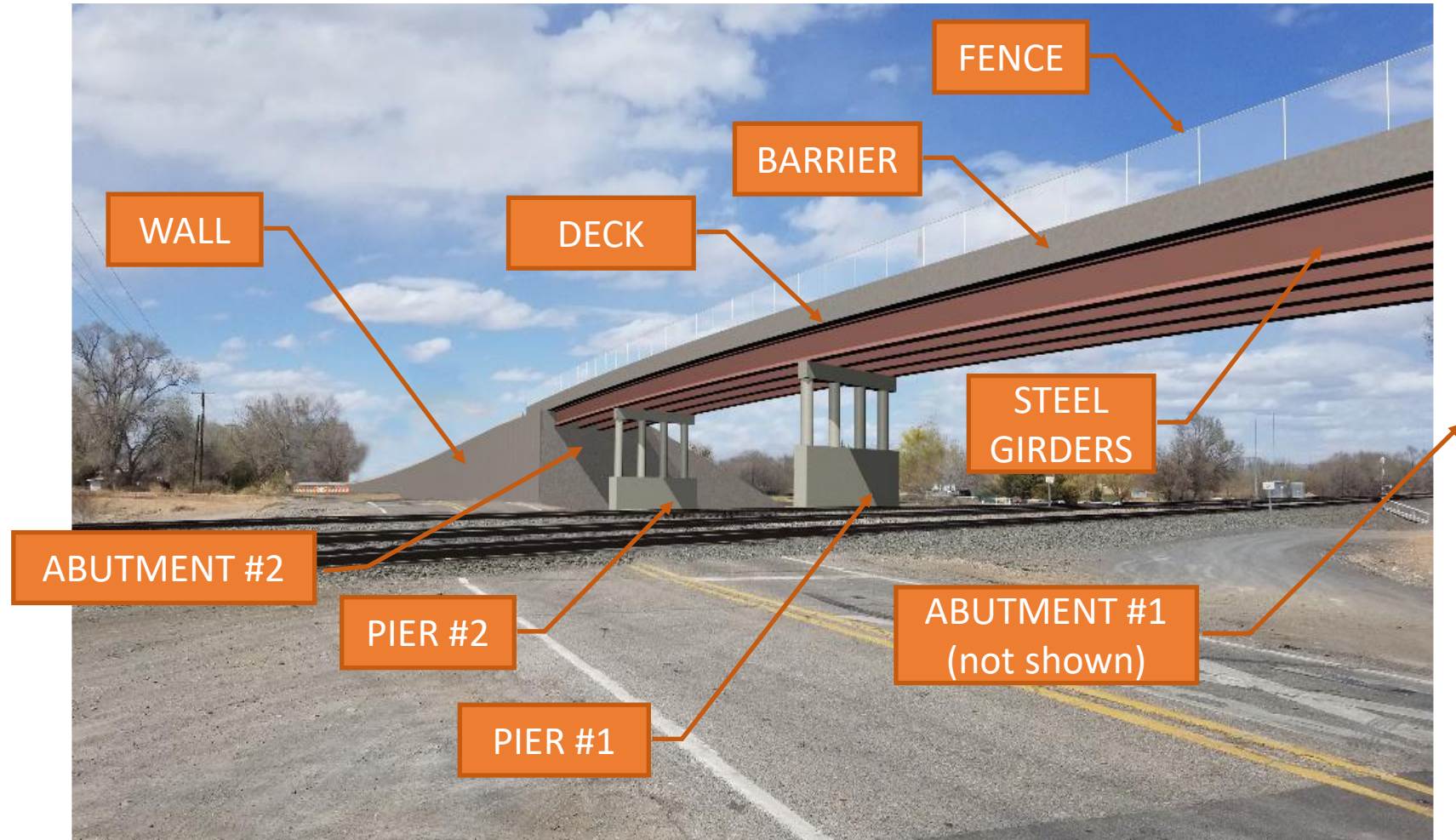
Right-of-Way



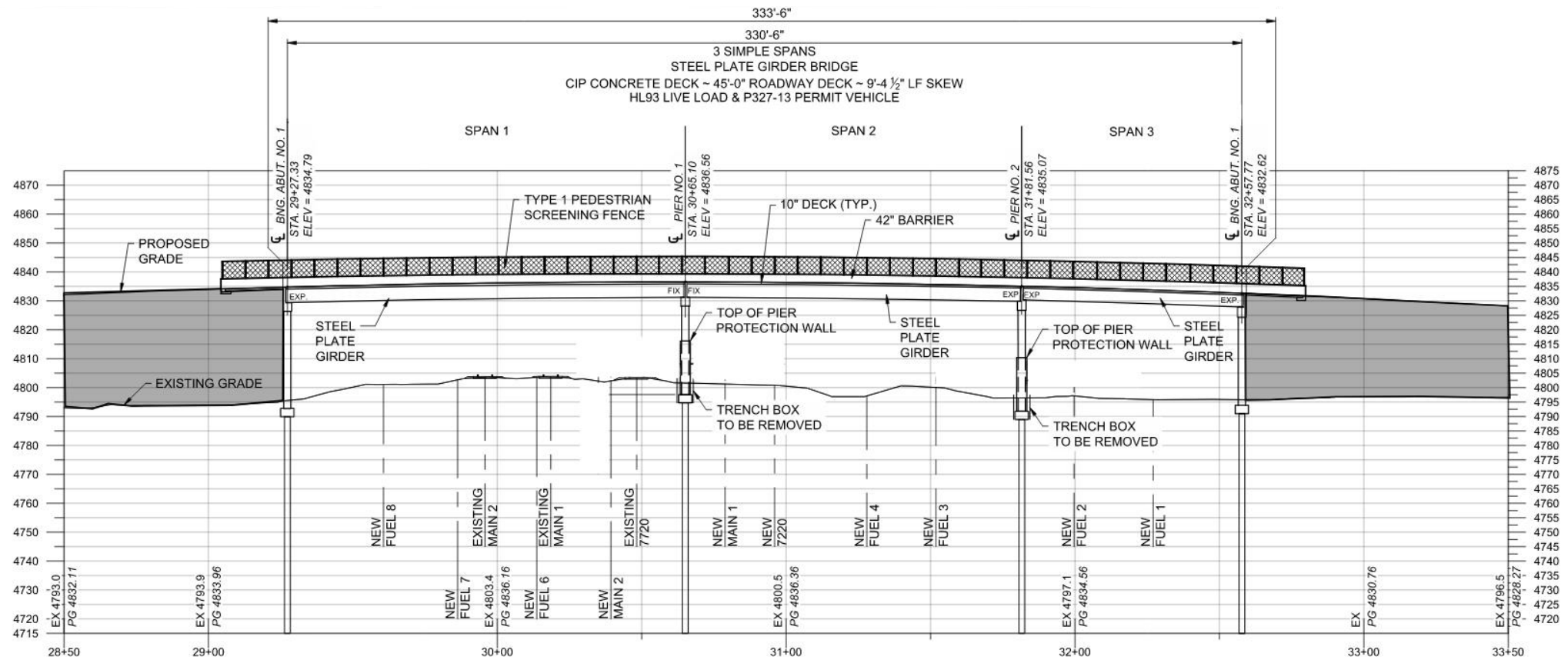
KEY

-  FULL ROW TAKE
-  PARTIAL TAKE
-  BNSF EASEMENT

Bridge



Proposed Bridge Elevation

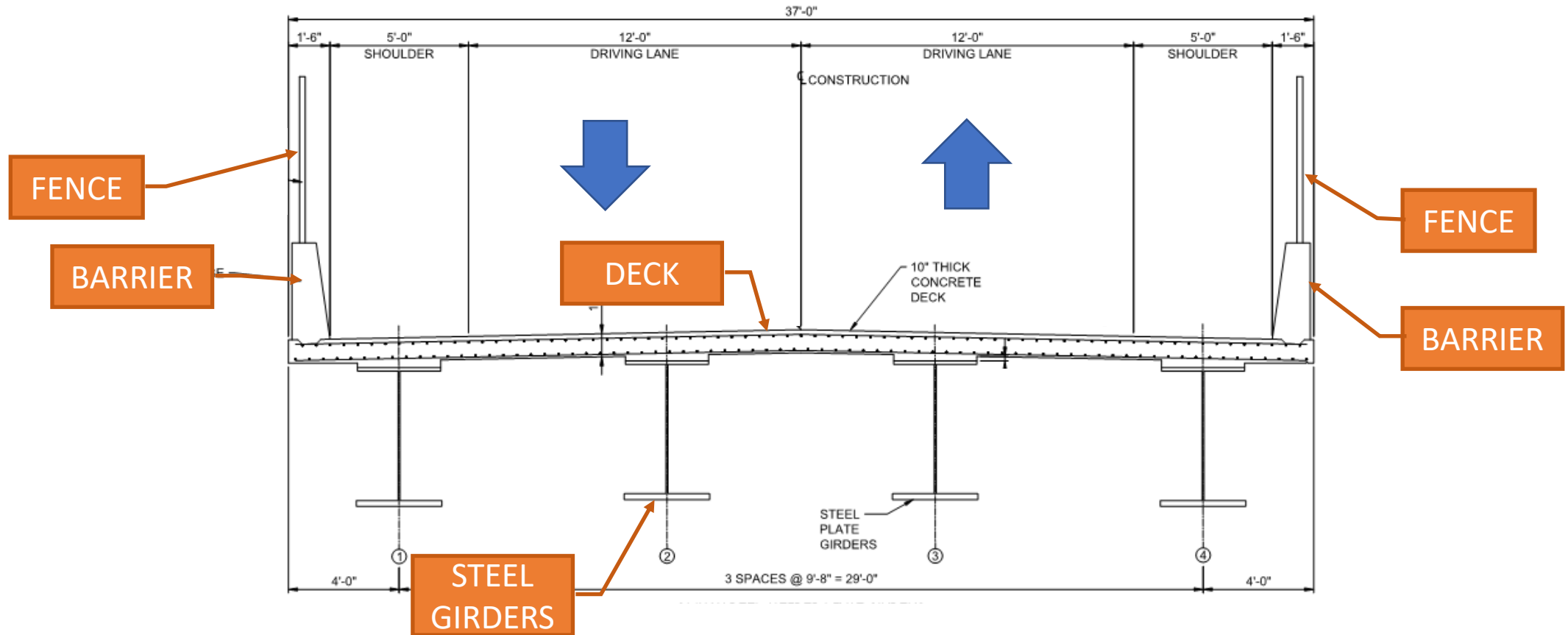


STRUCTURE ELEVATION

SCALE = 1:40

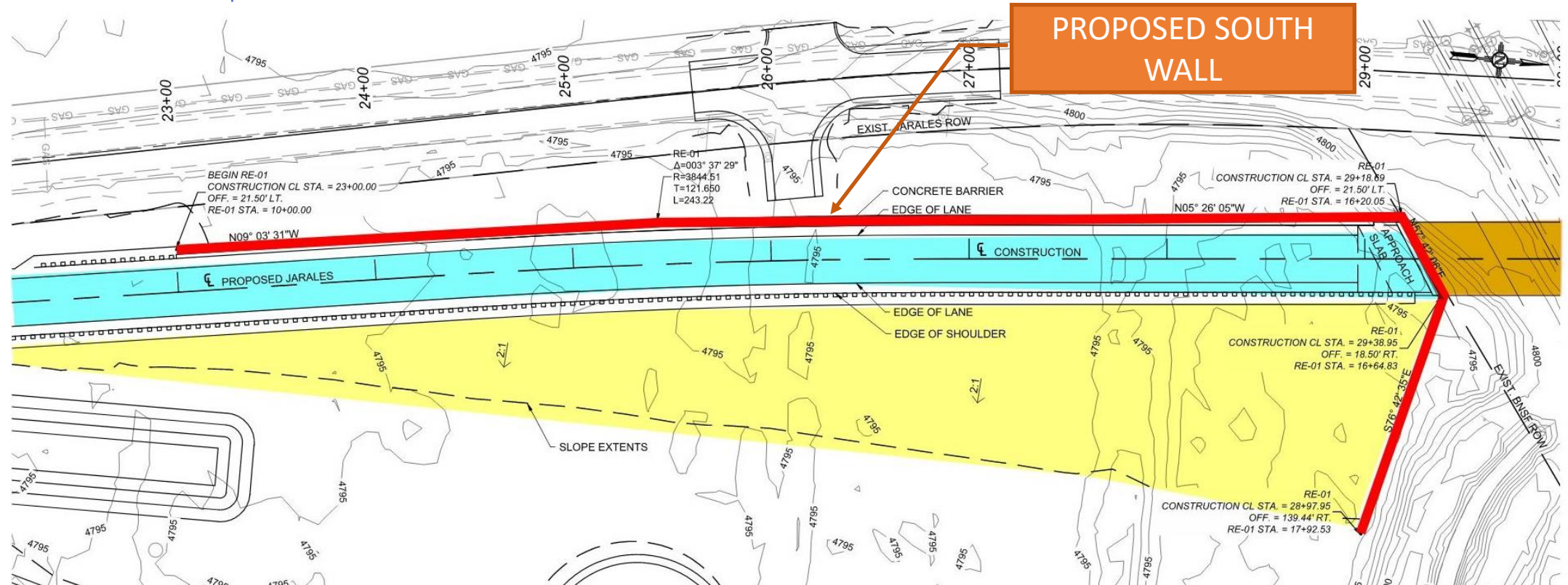
*MEASURED PERPENDICULAR TO PIER.

Proposed Bridge Typical Sections



Two 12-ft lanes & 5-ft shoulders

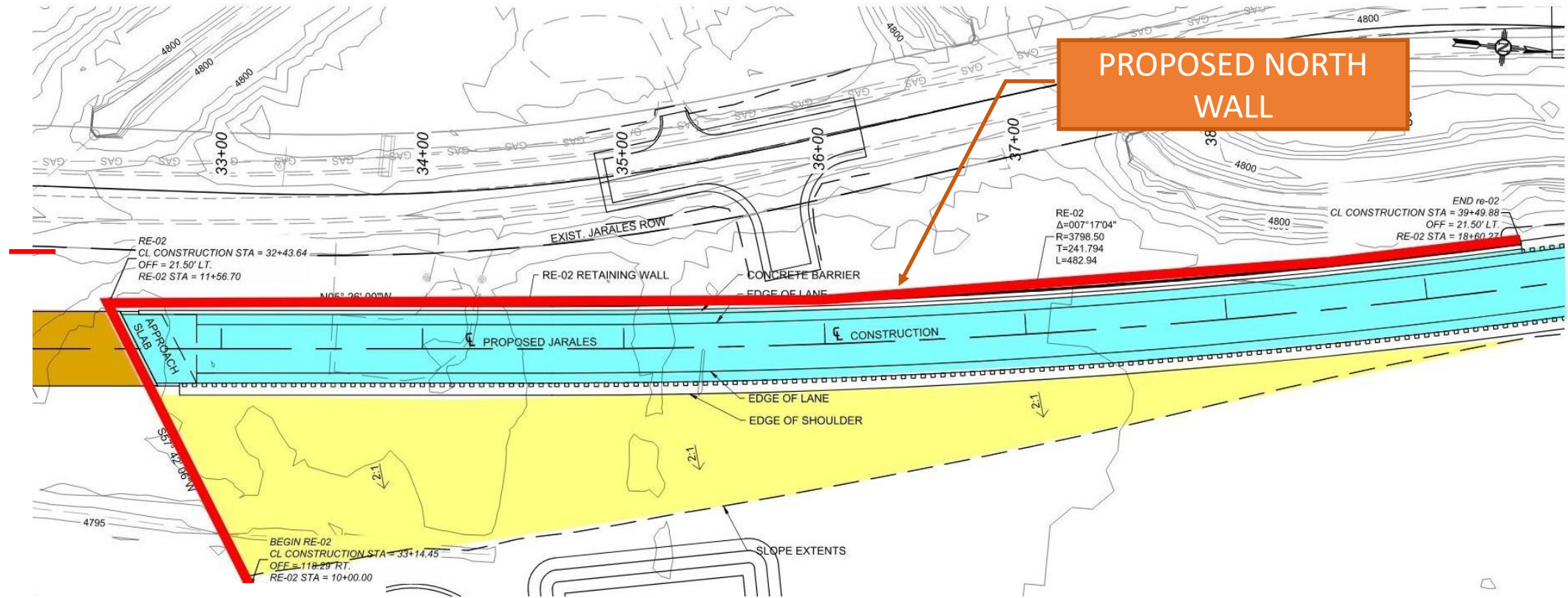
Proposed Walls



KEY

- | | |
|---|--|
|  NEW JARALES RD. |  BRIDGE |
|  EMBANKMENT |  RETAINING WALL |

Proposed Walls



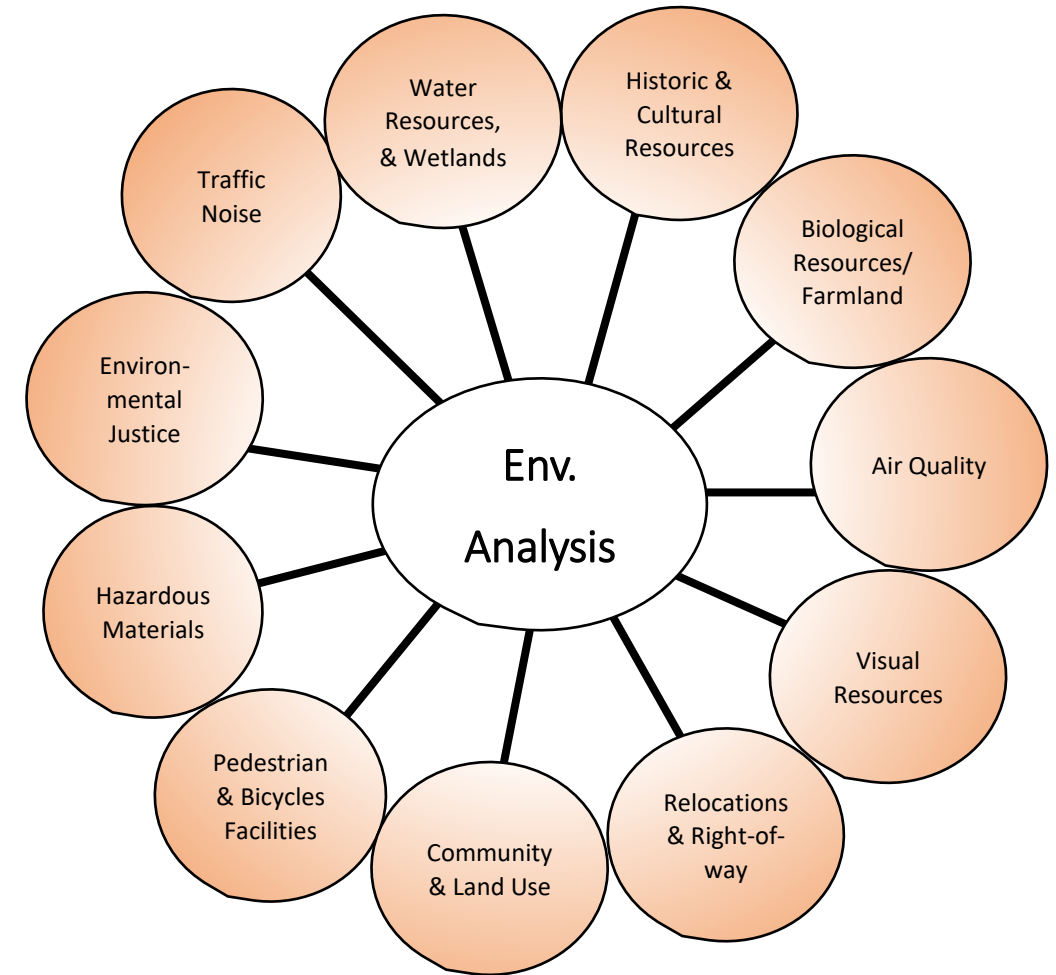
KEY

- | | |
|---|--|
|  NEW JARALES RD. |  BRIDGE |
|  EMBANKMENT |  RETAINING WALL |

Environmental Considerations

Process:

- NMDOT is preparing a categorical exclusion for the project.
- Environmental factors are being considered in the project decision-making process.
- A wide range of environmental factors are considered as shown here, but only those relevant to the project are studied in detail.



Key Issues for this Project

NATURAL RESOURCES

- Minor impacts to vegetation, resulting in loss of wildlife and bird nesting habitat.
- Preconstruction surveys for migratory bird nests will be conducted if construction cannot be scheduled outside of the migratory bird nesting season (March 15 to September 15).
- Some loss of farmland, but access for equipment and irrigation facilities maintained.
- Disturbed, previously vegetated areas will be reseeded/planted.



Cultural Resources

- A Class III pedestrian survey identified:
 - 3 isolated occurrences,
 - 28 historic buildings,
 - 3 irrigation ditches,
 - the railroad alignment, and
 - El Camino Real (Jarales Road).



- The historic buildings present in the corridor were not recommended as eligible for listing on the National Register due to modifications and condition issues that impact their historic integrity.
- Extensions/modifications of irrigation ditches but use/functions will remain intact.
- Pending agency review, *no adverse effects* to eligible properties are anticipated because their function and character-defining features will be retained.

Noise

- Expected changes in road noise from bridge elevation, but overall noise increase is expected to be minimal.
- Rail noise will increase from additional tracks and train operations.

Community/Land Use

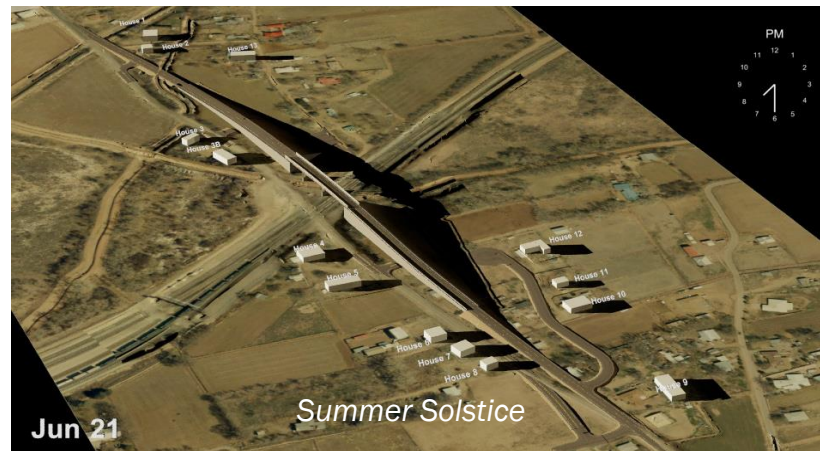
- Beneficial effects to safety, regional mobility, and emergency services responsiveness.
- Impacts to local access and neighborhood character.
- Residential relocations and right-of-way acquisition.

Visual Resources

The bridge would be a major, new element in the landscape.

The bridge would create shadows during certain times of the day and year.

WE INVITE YOUR
INPUT ON POSSIBLE
AESTHETIC
TREATMENTS FOR
THE BRIDGE.



How to Participate

- Visit the Project Website, <https://nm109.nmdotprojects.org/>, and complete the Comment Form.
- A record of the Virtual Meeting will be Posted on the Website
- E-mail Comments to: jtaschek@ecosphere-services.com.
- Mail Comments to:
Attn: NM 109 RR Grade Separation
Ecosphere Environmental Services, Inc.
320 Osuna Road NE, Suite C-1
Albuquerque, NM 87107

Please submit your comments no later than September 3, 2021

Your Meeting Controls

How to use your meeting controls to ask a question or provide your comments:

- Use the raise your hand button to raise your hand
- If you are on the phone press *9 to raise your hand
- Use the Q&A button to type in your question
- Or email your question to jtaschek@ecosphere-services.com

